

CERTIFIED LAND CORNER RECORDATION

DESCRIPTION OF CORNER EVIDENCE FOUND, AND ORIGINAL RECORD (if known)

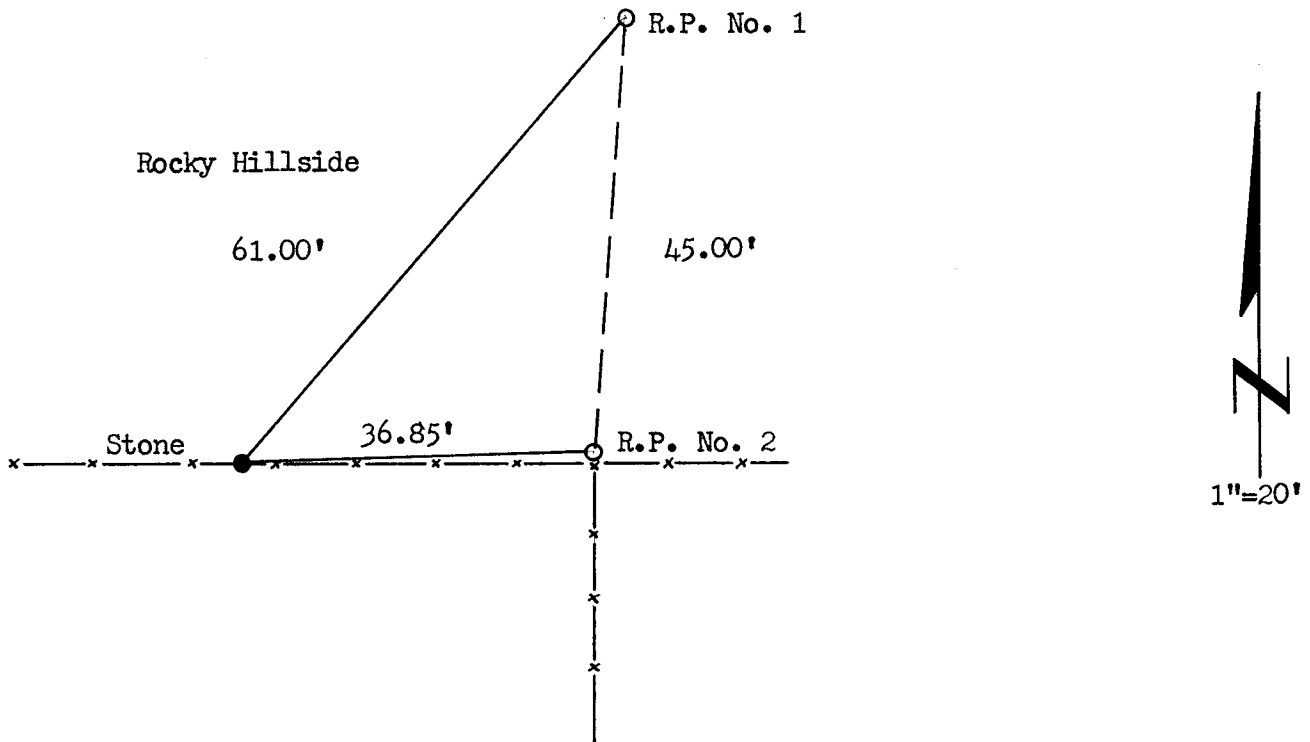
LOCATION
 T.15N. S 36
 T.14N. S 6-01
 R.62W., R.61W.
 6th P.M.
 (tp. cor.)

Found 6" x 10" white sandstone with 6 grooves on south, east and north faces. Stone is soft and easily chipped.
 G.L.O. record - Contract survey by Alfred M. Rogers in 1871 (Vol. 11) -
 "Set a white sandstone 20 x 10 x 6 with mound of rock for corner . . ."

DESCRIPTION OF MONUMENT AND ACCESSORIES ESTABLISHED TO PERPETUATE THE ORIGINAL LOCATION OF THIS CORNER:

- R.P. No. 1 - A 5/8" dia. x 24" long rebar with SurvKAP bears NE'ly, 61.00 feet distant.
- R.P. No. 2 - A 5/8" dia. x 24" long rebar with SurvKAP bears E'ly, 36.85 feet distant.

SKETCH, WITH COURSE AND DISTANCE TO ADJACENT CORNER IF DETERMINED IN THIS SURVEY.
 (May Sketch or Paste Reproduction on Reverse Side.)



I, R.L. Hudson certify that I have carefully performed ~~or reviewed~~ the work done on the diagrammed corner as reported on this recordation form and approve the same.

R.L. Hudson
 Signature of Surveyor

Wyoming L.S. No. 519
 Registration No.

STATE OF WYOMING,
 Office of Clerk and Recorder,
 County of Laramie

This "corner record" was filed for record on the 12th day of June, 1972, was noted on the cross-index plat and is assigned page No. 14-61, in book No. ONE.

Jody B. Hillman AW
 County Official

Cross Index No. <u>15N</u>	T. <u>62W</u>	R. <u>6th P</u>	Mer.
_____	T. _____	R. _____	Mer.
_____	T. _____	R. _____	Mer.
_____	T. _____	R. _____	Mer.
_____	T. _____	R. _____	Mer.
_____	T. _____	R. _____	Mer.
_____	T. _____	R. _____	Mer.

The State of Wyoming }
County of Laramie } SS

This instrument was filed for record
at 4:25 o'clock P. M. on the
12th day of December
A. D. 19 22 and duly recorded in
Book on page



County Clerk & Ex-Officio Register of Deeds
By, Deputy